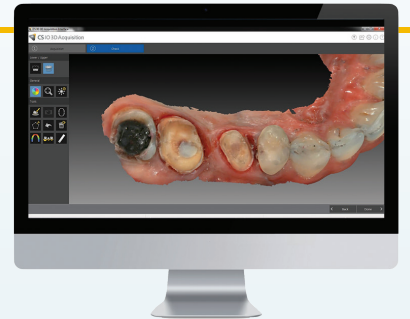


# TOP 4 Reasons to Upgrade to HD 3D Color for Your Intraoral Scanner

**Full HD 3D color scanning** fully benefits clinicians and lab technicians by replicating an authentic digital model of a patient's dental structure during the treatment planning process. However, not all intraoral scanners possess full-color capabilities. Fortunately, monochromatic scanning can be easily upgraded with the latest imaging solution. Here are four reasons you, your lab and patients can benefit from a more **COLORFUL** scanning experience.

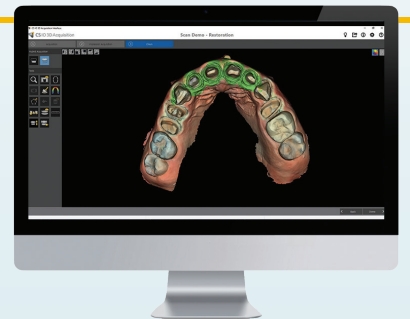
## 1 Helps You with Finish Line Identification

The color information captured by intraoral scanners is extremely beneficial for margin line identification as it can help you to distinguish the differences in color of the tooth and gingiva. The color contrast that 3D color offers can provide a better identifier for the finish line compared to the monochromatic STL files.<sup>1</sup>



## 2 Improves Communication with Your Lab

Full-color scans benefit labs by enabling them to create the best possible prosthetic match. The vivid details can help your lab identify various types of restorative materials and the margin line in the dental structure. From identifying the presence of blood to reflecting data merged with a hybrid scan workflow, the color details allow the lab to obtain a more accurate presentation of the patient's teeth.



## 3 Assists in Planning Implant Placement

With some intraoral scanners, such as the **CS 3600**, the color impression data obtained can be automatically merged with a 3D x-ray from a CBCT system. The 3D data can be easily transferred to third-party surgical guide software for the planning and fabrication of a guide.



## 4 Facilitates Better Conversations with Your Patients

Full-color 3D models can help patients better visualize and understand the proposed treatment plan. Patients can see cracks, stains, fractures, chips, missing and crowded teeth on the lifelike color impression. Hygiene discussions are also more effective as color scans better show plaque, food, blood or gingival discolorations.



Whether your goal is to improve communication with your lab or to deliver more powerful patient consultations, a color upgrade provides an extra edge that will improve precision and streamline excellence in the dental practice. The **CS 3600 Access scanner** offers an ideal intraoral scanning experience that can be easily upgraded with a simple software upgrade. The CS 3600 can capture 2D photos from a color scan, combine chairside restorative planning in full HD, and depict PLY datasets in vibrant details. Both the practitioner and patient can benefit from the accurate digital impression the CS 3600 offers.